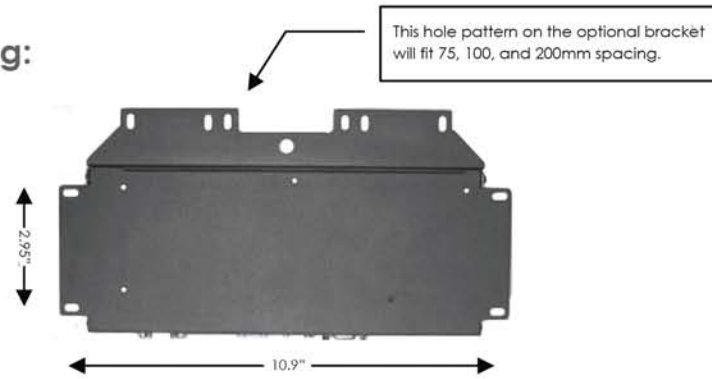


Mounting:



The media player should be located in a well ventilated, air-conditioned space for best operation. Several mounting options are available to the installer. In addition to the two mounting ears integrated into the main chassis, an optional, detachable bracket is available that has hole spacing for standard VESA mounting patterns. There is also a larger 0.368" hole centrally located in case the unit should need to be attached to a larger bolt. See photo for hole locations. The dimensions given are measured from center to center of the holes.

The unit has ventilation holes along the sides and top. These should remain uncovered during operation. There are no ventilation openings on the bottom of the chassis, so it may be bolted directly to a shelf or monitor.

Troubleshooting Tips:

1. There is no video or audio on the monitor.
 - Make certain the unit's Green LED is on and the Red LED is flashing.
 - Check video cable connections and input settings on monitor.
 - QuickSign may be used to determine the unit's current video resolution. Verify the monitor is capable of this resolution.
 - Use the remote to browse to the video folder and select the desired video.
2. QuickSign player scan does not find my unit on the network.
 - Check the Ethernet RJ-45 LEDs to see if they are active. Verify network cables are securely inserted.
 - Verify with the on screen menu that the unit has an IP address that is in the sub-net you are using. DHCP may be disabled.
 - If you are plugging directly into the unit from a computer, a crossover cable is required.
3. How do I change video resolution?
 - Use the Set Resolution tab under Tools in Quick Sign to change video output type and resolution. There is also a button for retrieving the current video setting on the unit.
4. Why is the color wrong on my VGA monitor?
 - The unit is most likely set for HDMI or component video output. Use the Set Resolution under Tools in Quick Sign to change to the proper VGA output resolution.

CE labs Warranty:

Cable Electronics, Inc. warrants this product to be free from defects in material and workmanship, under normal use and service, for a period of one year from the purchase by the original purchaser. If this product is defective or malfunctions, Cable Electronics will replace or repair this unit (at our option) within a reasonable time. No expressed or implied warranty is made for any defects or damage caused by immersion or exposure to liquids, abuse, neglect, improper operation of unit, excess wear and tear and/or defects resulting from unauthorized disassembly and/or modification.



3209 Wood Dr.
Garland, TX 75041
www.celabs.net
P: 1.800.767.6189
469.429.9200
F: 469.429.9205

MP500

High Definition Media Player

930-2208-01 Rev K



Quick Start Guide

This guide will explain the basic connection and operation of the MP500. For full details on operation, refer to the MP500 manual.

Unpacking:

The box should contain the following items:

- MP500 Media Player
 - Universal Power Supply and Power Cable
 - Remote Control/2 AAA Batteries
 - Quick Start Guide
 - CCM QuickSign Software
 - HDMI Cable
 - Optional item(s) that were ordered at time of purchase
- Download this guide at:
celabs.net/support/downloads/documents



Network Setup:

The unit will be shipped with DHCP enabled. A fixed IP address may be assigned via the unit menu. Press the menu button on the remote control and follow the onscreen instructions to set up the network address.

Connections:

The MP500 is capable of driving a wide variety of displays at up to 1080P resolution at bit rates up to 40 Mbps. Connect the following cables to operate the unit.

- **Display cable** – Depending on the application, plug in the cable from the media player to the display. The HDMI and VGA cables are run directly. The component video output uses a DB-15 to RCA cable to break out the video signal. The appropriate cable should be ordered at the time of player purchase.

- **Audio cable** – The audio output is via two RCA jacks on the rear panel. Connect a patch cable from the rear jack to the display or audio system as desired. The audio cable is not needed when HDMI is connected as audio is integral to the HDMI cable.
- **Network cable** – Certain operations require a network connection in order to implement. Connect an Ethernet cable between the MP500 10/100 port and a local Ethernet switch. Alternatively, you may connect the player to a local PC using a crossover cable.
- **F-Connector RF coax** – If you have purchased a MP500T, the unit has a built-in ATSC tuner for receiving HD broadcasts. Use the remote up and down arrow keys to change channels or the number may be entered directly on the keypad.
- Insert the power plug into the MP500. Plug the power supply cord into a 120VAC outlet.
- Please wait for approximately one minute until the unit completes the boot-up process. If a default startup playlist has been defined and content is on the local storage medium, the unit will begin to display video. If no video appears, press the menu button on the remote control to check on the unit's status.

Menu:

If you have a standard unit without a media card installed, you will see a text based menu on screen. The menu allows a user to view the media player network settings and adjust some parameters. A media player with an internal storage card and the dual layer option will display a graphical OSD when the remote "menu" button is pressed. The graphical menu allows additional features for browsing content on internal or external storage memory.



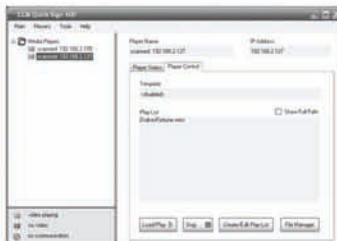
CCM QuickSign Software Installation & Operations:

Included with the player is our CCM QuickSign software. This will allow you to perform basic operations over a local network. More sophisticated features, such as Internet remote control, playlist scheduling, and data logging are available in our full CCM (CE labs Content Manager). Please contact our sales department at www.celabs.net for more details.



Install the CCM QuickSign application from the CD. QuickSign trial software will function for 30 days on one player. Contact your sales representative for the software activation code.

Click on Tools and select Player Search and Start Scan. When player(s) on local network are found, click on Add Players.



The Player Status screen will tell you what file is currently playing and if there is a playlist.

The Player Control tab controls several functions: Load/Play, Stop, Create / Edit Playlist, and File Manager

- File Manager allows you to directly see the player content and launch a file. This is also where you may delete files from the player.
- Create / Edit Playlist is used to select the desired files for playback. This is also where you specify the video scale in case there is a template.

- After creating and saving a playlist, select the desired playlist and click on the Load / Play button. This will launch the selected playlist. If the files in the playlist are not already on the player, they will be downloaded into the player.
- Pressing Stop of course sends a stop command to the player. The player icon will change from green to red when the player is not playing a file.

The Create/Playlist Editor allows you to make a list of a group of media for playback. If the media player is equipped with a browser layer, it is possible to scale the video screen and display a HTML template around the perimeter of the screen. Click on Specify Template and set the scale to fit the template HTML page defined in the Template URL box. Save the playlist and it will now appear in the playlist window under Player Control. Click on Load/Play button to launch playlist.



Important Safety Instructions:

1. Read these instructions.
2. Keep these instructions.
3. Heed all warnings.
4. Follow all instructions.
5. Do not use this apparatus near water.
6. Clean only with dry cloth.
7. Do not block any ventilation openings. Install in accordance with the manufacturer's instructions.
8. Do not install near any heat sources such as radiators, heat registers, stoves, or other apparatus (including amplifiers) that product heat.
9. Do not defeat the purpose of the polarized or grounding-type plug. A polarized plug has two blades with one wider than the other. A grounding type plug has two blades and a third grounding prong. The wide blade or the third prong are provided for your safety. If the provided plug does not fit into your outlet, consult an electrician for replacement of the obsolete outlet.
10. Protect the power cord from being walked on or pinched particularly at plugs, convenience receptacles, and the point where the exit from the apparatus.
11. Only use the attachments/accessories specified by the manufacturer.
12. Use only with the cart, stand, tripod, bracket, or table specified by the manufacturer, or sold with the apparatus. When a cart is used, use caution when moving the cart/apparatus combination to avoid injury from tip-over.
13. Unplug this apparatus during lightning storms or when unused for long periods of time.
14. Refer all servicing to qualified service personnel. Servicing is required when the apparatus has been damaged in any way such as power supply cord or plug is damaged, liquid has been spilled or objects have fallen into the apparatus, the apparatus has been exposed to rain or moisture, does not operate normally, or has been dropped.

WARNING: To Reduce The Risk Of Fire Or Electric Shock, Do Not Expose This Apparatus To Rain Or Moisture



CAUTION: To reduce the risk of electric shock, do not remove cover or back. No user serviceable parts inside. Refer servicing to qualified personnel.