

CE labs can support many areas of your audio and video distribution needs.

We manufacture:

- Digital Signage software and Media Players
- HD Matrix Switchers
- RF amplifiers
- HDMI and Component HD distribution amplifiers
- CAT 5 Signal Extenders
- VGA Extenders and Splitters
- and cables of all types.

See our full product line at www.celabs.net

WARRANTY

Cable Electronics, Inc. warrants this product to be free from defects in material and workmanship, under normal use and service, for a period of one year from the purchase by the original purchaser. If this product is defective or malfunctions, Cable Electronics will replace or repair this unit (at their option) within a reasonable time. No expressed or implied warranty is made for any defects caused by immersion or exposure to liquids, abuse, neglect, improper operation of unit, excess wear and tear and defects resulting from unauthorized disassembly and or modification.

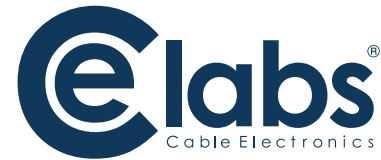


3209 Wood Drive
Garland, TX 75041
Phone: (469) 429-9200
Toll free: (800) 767-6189
Fax: (469) 429-9205
www.celabs.net

Document: MP400A_manual.pdf

930-2205-01

INSTRUCTION MANUAL



MP400A Digital Media Player



Unpacking:

The box should contain the following items:

- MP400A Media Player
- Universal Power Supply and power cable
- Remote Control
- Quick Start Guide
- Operations CD with manual and demo CCM Quick Sign 400 Software
- Optional cable(s) that were ordered at time of purchase.

Connections:

The MP400A is capable of driving a wide variety of displays at up to 1080P resolution at bit rates up to 25 Mbps. Connect the following cables to operate the unit.

- Display cable – Depending on the application, plug in the cable from the media player to the display. The HDMI and VGA cables are run directly. The component video output uses a DB-15 to RCA cable to break out the video signal. The appropriate cable should be ordered at the time of player purchase.
- Audio cable – The audio output is a 3.5mm (1/8th inch) jack on the rear panel. Connect a patch cable from the rear jack to the display or audio system as desired.
- Network cable – Certain operations require a network connection in order to implement. Connect an Ethernet cable between the MP400A 10/100 port and a local Ethernet switch. Alternatively, you may connect the player to a local PC using a crossover cable.
- Connect the power plug into the MP400A. Plug the power supply cord into an electrical outlet.
- Please wait for approximately 45 seconds until the unit completes the boot-up process. If a default startup playlist has been defined and content is on the local storage medium, the unit will begin to display video. If no video appears, press the menu button on the remote control to check on the unit's status.

Note: The RS-232 and GPIO ports are not used at the present time.



Network Setup:

The unit may be assigned a fixed IP address, or DHCP may be used to obtain an address automatically. Press the menu button on the remote control and follow the onscreen instructions to set up the network address.

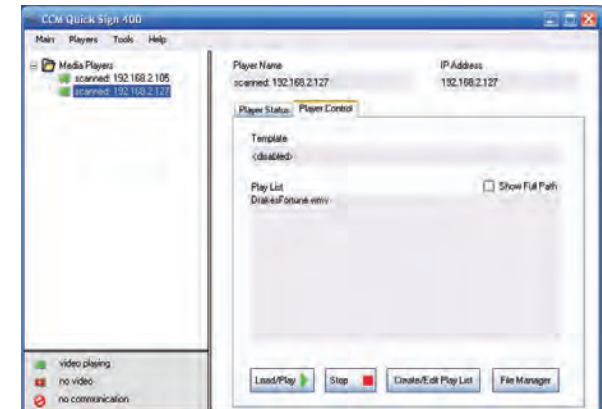
CCM Quick Sign 400 Software Installation and Operations:

Included with the player is a time limited demo of our CCM Quick Sign software. This will allow you to perform basic operations over a local network. More sophisticated features such as Internet remote control, playlist scheduling, and data logging are available in our full CCM (CE labs Content Manager). Please contact our sales department at www.celabs.net for more details.

Install the CCM Quick Sign application from the CD. Quick Sign demo will function for 15 days on one player. Contact your sales representative for the software activation code.



Click on Tools and select Player Search and Start Scan. When player(s) on local network are found, click on Add Players.



The Player Status screen will tell you what file is currently playing and if there is a playlist.

The Player Control tab controls several functions:

Load / Play, Stop, Create / Edit Playlist, and File Manager

- File Manager allows you to directly see the player content and launch a file. This is also where you may delete files from the player.
- Create / Edit Playlist is used to select the desired files for playback. This is also where you specify the video scale in case there is a template.
- After creating and saving a playlist, select the desired playlist and click on the Load / Play button. This will launch the selected playlist. If the files in the playlist are not already on the player, they will be downloaded into the player.
- Pressing Stop of course sends a stop command to the player. The player icon will change from green to red when the player is not playing a file.