

MP700/MP70

*Series 7 – Network-ready
Digital Signage Players*



This guide will explain the basic setup for streaming video and audio to the MP700 and MP70 HD media players using the CE labs QuickSign Pro 700 software.

THIS PAGE IS LEFT
INTENTIONALLY BLANK

Before getting started:

Streaming is very bandwidth intensive. Make certain in your application that your network has sufficient bandwidth available. Be aware that streaming will consume a very large percentage of bandwidth and it is a good idea to put it on a separate network, if possible.

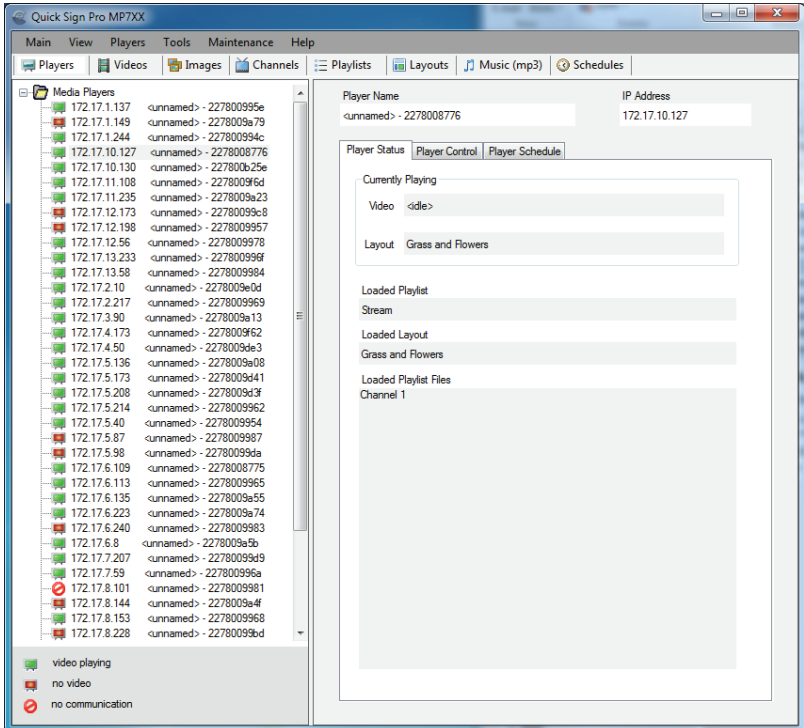
You need a fast computer to supply the video stream. For demonstration purposes, you can set up a stream using the VLC program. Listed below are steps for creating a sample video stream.

- 1** – Launch VLC
- 2** – Click on Media and then Stream
- 3** – Add a file
****(The file should be less than 1Mb/S for smooth streaming operation)*
- 4** – Click on STREAM and then NEXT
- 5** – Under Destinations, click on Display Locally and drop down the File box. Select RTP / MPEG Transport Stream.
- 6** – Click ADD and put in an URL and Base Port.
An example would be Address: 239.255.42.42 Port: 1234
- 7** – If you desire to use transcoding, Video – MPEG-2 +MPGA (TS) is a good choice.
- 8** – Click STREAM to begin sending out the video stream

QuickSign Pro 700

Launch QuickSign Pro 700 and allow it to find the players on your network. You should see the target player(s) populated in the Media Player Table in the left column.

Select the desired player from the table.



QuickSign Pro 700

Click on CHANNELS and then on +New Channel. Add the desired name and description. Click on Stream (RTP) and then type the URL of the stream you created on your network.

Example: **rtp://239.255.42.42:1234**

Click OK to save the new channel.

New Channel

Channel Name (Alias)
Video Stream Orientation

Description
This is streaming training videos.

Channel Type
 Tuner (ATSC or QAM channel) Internet Address (Http) Stream (RTP)

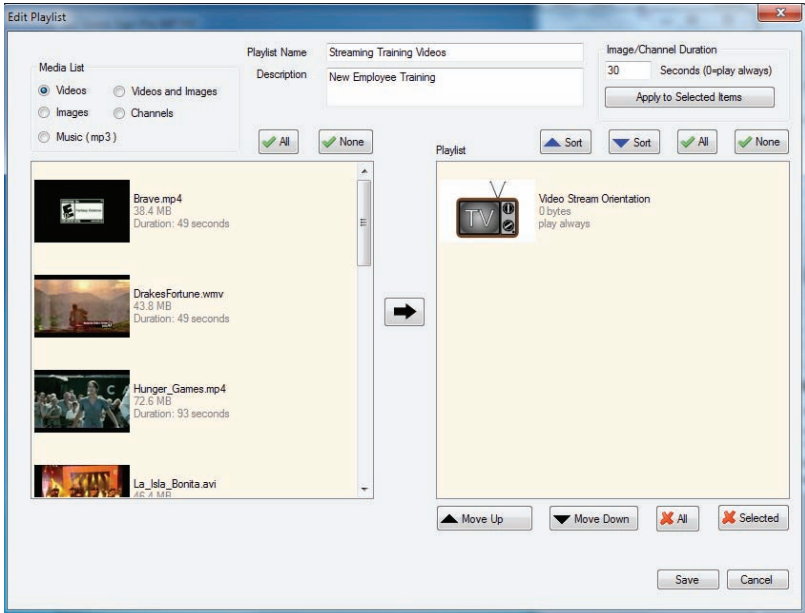
Channel (ex 14-1) - ATSC or QAM depends on player tuner mode - see Tools->Tuner Control

Internet Http Address or RTP Stream
rtp://239.255.42.42:1234

OK Cancel

QuickSign Pro 700

Click on Playlists and then on +New Playlist. Select Channels in the Media List and move the newly created channel into the playlist box. Add the desired name and description at the top of this dialog box and click on SAVE to create the new Playlist.



QuickSign Pro 700

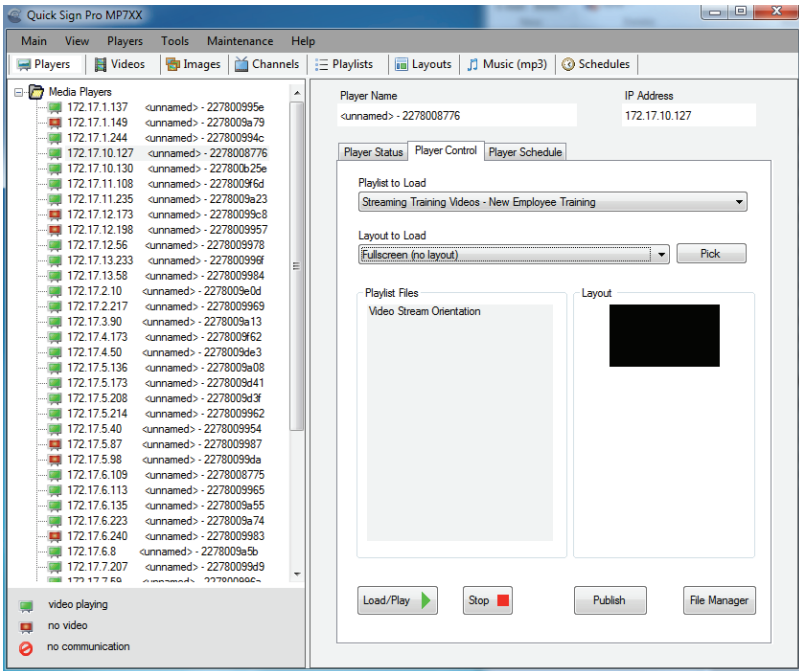
Go back to the main menu by clicking on Players and then select Player Control tab on the right side.

Click on the Playlist to Load box and select your streaming playlist.

Select a Layout to use with the streaming video or leave it set to No Layout for full screen streaming video.

Make certain you have the desired player selected in the left column and press Load / Play to send the Streaming Playlist to the player.

If the Video Stream is active, the video will begin to play on the MP700/MP70 after about a 15-second buffer period.



FAQ/Troubleshooting Tips:

1. I do not see a picture on the MP700. How can I verify the stream is active?

- a. Use another PC that is on the same subnet and open the video stream in the VLC media player application. If the stream is active, it should appear on the PC.
- b. The video in the stream may not be the correct codec. Do not use Quick Time movies.

2. The video is breaking up.

- a. The video bit rate may be too high.
- b. The network may be congested and lack sufficient bandwidth.

3. The MP700 has a frozen picture.

- a. The network streaming feed has been interrupted. Either the network is down or the stream generator has stopped.

4. How do I change video resolution?

- a. Remote: Press the TV MODE button on the remote control. This will cycle through the options.
- b. PC: You will need to have the MP700 connected to a computer via Ethernet. Use the Set Resolution tab under Tools in Quick Sign Pro 700 to change video output type and resolution. There is also a button for retrieving the current video setting on the unit.
- c. You may also press the Change Resolution button on the top of the unit if this option is installed.

5. Why does writing files to my player via Quick Sign Pro 700 fail?

- a. Verify that the Windows Firewall is OFF.
- b. Verify that the write protect tab on the SD card is in the off position.
- c. Verify that there are no spaces in the file names. Use underscores instead of spaces and avoid using unusual punctuation marks.

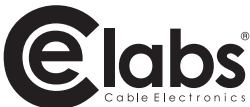
THIS PAGE IS LEFT
INTENTIONALLY BLANK

CE labs can support many areas of your audio and video distribution needs.

We manufacture:

- Digital Signage software and Media Players
- HD Matrix Switchers
- RF amplifiers
- HDMI and Component HD distribution amplifiers
- CAT 5 Signal Extenders
- VGA Extenders and Splitters
- and cables of all types.

See our full product line at proav.celabs.net



3209 Wood Drive
Garland, TX 75041
Phone: (469) 429-9200
Toll free: (800) 767-6189
Fax: (469) 429-9205